



Outdoor Systems®  
**AluGarden**

*“like wood”*









\*Floor decking, sun breakers, cushions, and accessories are optional.



“OUR EFFORTS ARE  
**dedicated**  
TO THE  
**Shadow**”

AluGarden: Innovative Outdoor Solutions At AluGarden, we focus on crafting smart and stylish options for gardens, balconies, and terraces.

Our primary material is aluminum, an exceptional metal that upholds the highest beauty standards, durability, and ergonomic design. Utilizing aluminum’s versatility, we enhance outdoor spaces into lively, comfortable settings filled with vibrancy. Our goal is to shape aluminum meticulously, incorporating thoughtful details that transform your area into a sanctuary of comfort. We excel at creating bright, insulated spaces that shield you from heat, noise, and rain.

Envision your dream space. We’re ready to turn it into reality.

Outdoor Systems®  
AluGarden







# GOLDWOOD<sup>®</sup> Not wood, just better...

4



# LIKE WOOD



## Authentic wood APPEARANCE, ENTIRELY MAINTENANCE-FREE: Aluminum!

Goldwood mimics wood, yet it conveys the strength of metal upon touch. It won't decay, demands no upkeep, requires no painting, and maintains its visual charm for years. All our products feature an Italian wood effect film, providing a stunningly natural look.

5

\*Floor decking, sun breakers, cushions, and accessories are optional.



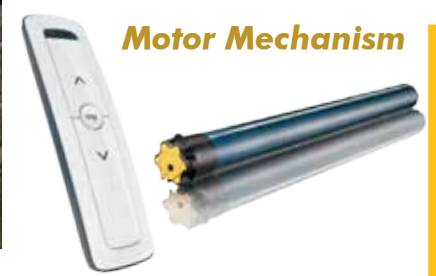


# Manual <sup>or</sup> MOTORIZED

YOUR CHOICE YOUR COMFORT

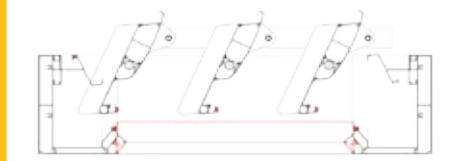
You have the option to operate your pergola either manually or through a motorized system that includes a remote control for an additional fee.

If you wish, you can upgrade to the motorized system later. This adaptable feature ensures both ease of use and convenience.



**Manual Crank Handle**

**OPEN Position**



**CLOSED Position**







\*Decking, furniture, and cushions are optional.



# MODERN DESIGN **Charismatic** AND STYLISH



Your pergola should embody your essence. It ought to be as modern and captivating as you. With its broad, sturdy profiles, GoldWood is poised to serve as a striking and impressive pergola that mirrors your personality.

It must signify your quality and demonstrate your meticulous attention to detail. It should convey a sense of luxury and elegance rather than appear inexpensive or flimsy, like those available at hardware stores.

Goldwood possesses every quality necessary to fulfill these expectations.





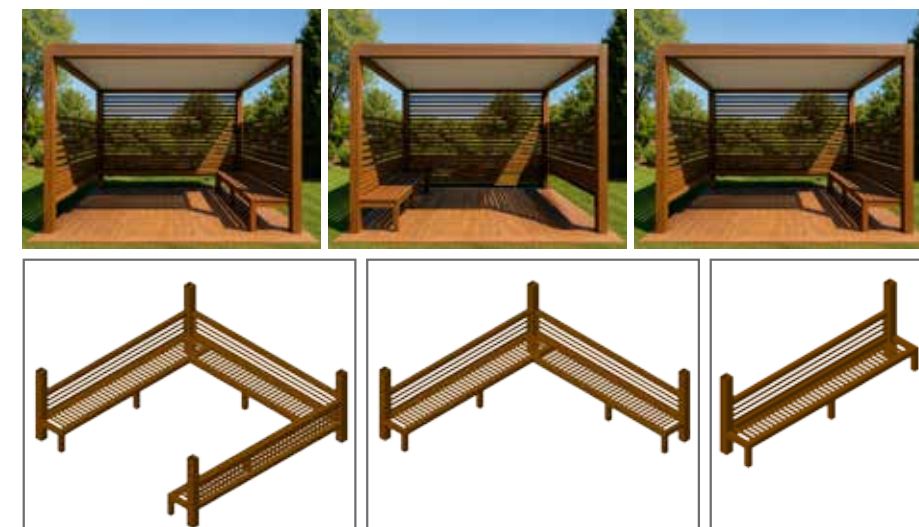
\* Seating set available as an option.

# ENHANCED **Comfort** INCREASED **Seating** SPACE

For customers who select Goldwood, we offer optional seating benches made from the same material as the pergola, ensuring they integrate perfectly with its design.

You can create a spacious seating area, ideal for those looking to avoid cramped conditions during busy gatherings.

Additionally, there's no immediate need to purchase this product; you can acquire it later and install it on your pergola at your convenience. Plus, you have the option to choose the side on which to place the benches.







12



# Pre-assembled

FOR EFFORTLESS INSTALLATION  
QUICK AND EASY SETUP

All parts of your pergola arrive pre-assembled and ready for setup. With just three people and a drill, assembly takes about three hours. No special skills are needed! Just tighten 32 screws, and your pergola is good to go. Thanks to its simple installation, you'll save time and won't require professional help.



13



\* Installation is available at an additional cost.







\*Decking, furniture, and cushions are optional.

# Design it COMBINE Expand

Goldwood and Modular Freedom Goldwood is available in six different standard sizes — but you're not limited to those.

We also offer custom solutions for larger spaces. Thanks to its modular design, you can expand your pergola to any size by combining multiple units. Whether you're enhancing your garden or optimizing a commercial space, Goldwood offers the flexibility you need.

For detailed information and project-based solutions, simply get in touch with our sales consultants.





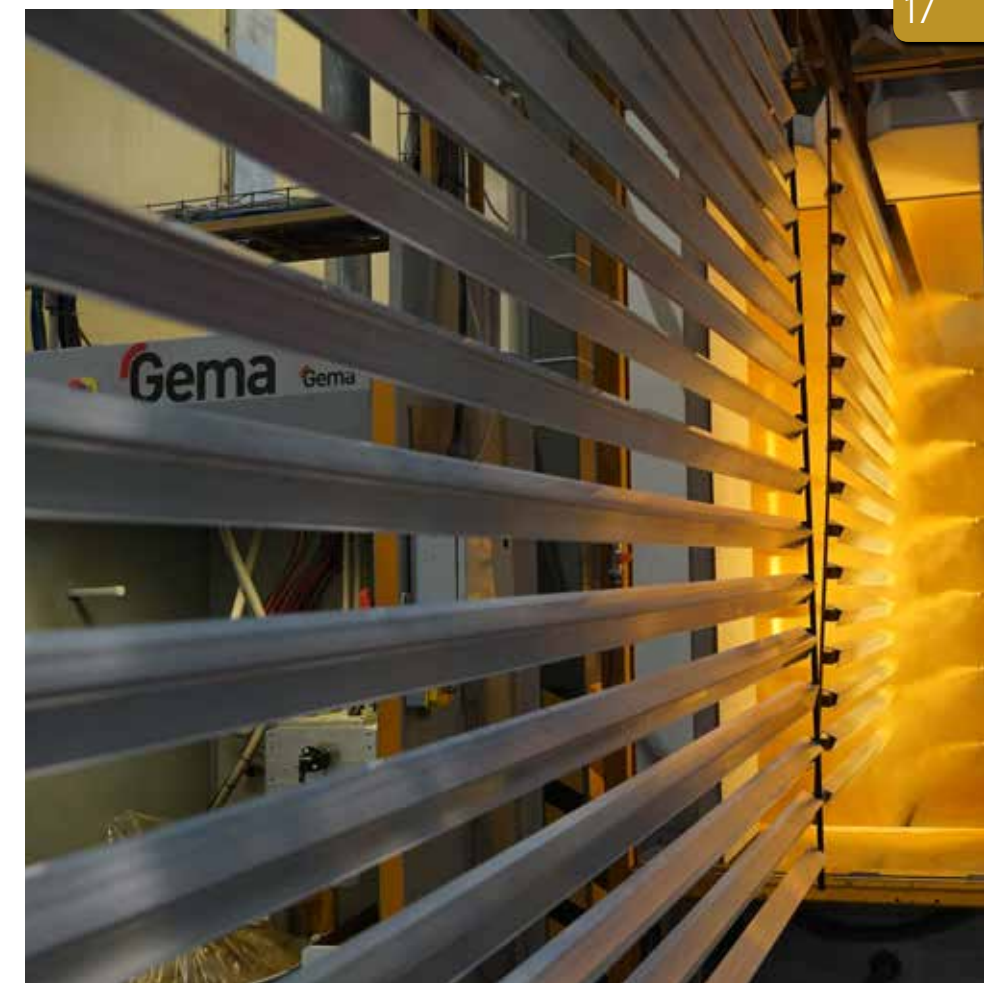


# Long-lasting Protection

## CLASS2 ELECTROSTATIC PRIMER PAINT

Our pergola is coated using a unique Class 2 electrostatic primer in our state-of-the-art painting facility. Alcas Paint Factory explicitly produces this primer for Akzo Nobel and Jotun, adhering to Qualicoat standards, prior to the installation of the wood cladding.

With a 10-year guarantee, this Class 2 primer paint ensures exceptional durability against harsh weather conditions like sunlight, rain, snow, and wind erosion.







**BODY**  
KENTUCKY OAK COLOR



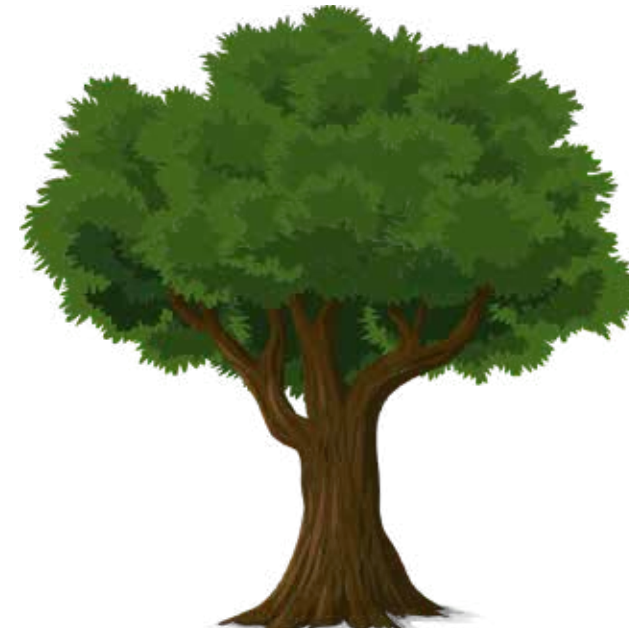
**COLORS**  
KWILA COLOR



**LOUVER COLOR**  
WHITE WOOD COLOR



\*The actual colors of the product may vary slightly from the printed colors on this page.



#### WOOD EFFECT TRANSFER COLORS



# BEST-SELLING Wood Colors

## AVAILABLE STOCK COLORS

After applying electrostatic primer paint to the pergola profiles, they receive wood cladding at Alcas' film coating factory in Italy. The factory utilizes weather-resistant film coils backed by a 10-year warranty. For our inventory, we offer two color choices for the main body of the pergola and one color option for the ceiling slats. Additional colors may be available based on the quantity of the order.

You can explore more color options on our website:  
[www.alcagarden.us/sublimation/](http://www.alcagarden.us/sublimation/)







*\*\*Floor decking, sun breakers, cushions, and accessories are optional.*



### 10-Year Product and Parts Warranty

Your pergola comes with a 10-year warranty that protects against material and manufacturing defects, allowing for safe use over many years.

We will supply replacement parts during the warranty period for any production-related issues.

Our product is resistant to rot, rust and deformation, while the wood-look cladding ensures high durability against sunlight and various weather conditions.



### Thermal Insulated Slats

Your pergola's ceiling panels are fitted with 34 kg/m³ EPS boards, which provide insulation against heat and cold and prevent rain induced rattling of the slats for enhanced comfort. The 34-density EPS material is also highly effective at minimizing heat transfer into the interior, particularly during high temperatures.



### Superior Weather Resistance

Our pergola system features specially designed, sturdy profiles that can endure strong winds and heavy snow loads.

Built to withstand storms, rain, and extreme temperatures, our products are designed for long-lasting performance in harsh weather conditions.



# **Eco-Friendly** PRODUCTION **Nature-Aligned** DESIGN

Production utilizes recyclable aluminum and eco-friendly methods. Unlike wooden pergolas, this solution avoids chemical paints and varnishes, making it a more environmentally responsible choice.

*\*Floor decking, sun breakers, cushions, and accessories are optional.*





BRIGHTEN  
*with*  
**Your Night**  
LED LIGHTING

The LED lighting system in your pergola features three different color options, giving you stylish and practical lighting.

This setup lets you enjoy reading books at night or enhancing your evening meals.



*\*Floor decking, sun breakers, cushions, and accessories are optional.*





26

*\*Floor decking, sun breakers, cushions, and accessories are optional.*



**Powerful  
& ROBUST  
Designed  
JUST FOR YOU**

27



### Waterproof Roof

With the rainproof roof system, your pergola is equipped for all weather conditions.

When closed, the roof prevents rainwater from entering.

The styrofoam panels deliver sound and heat insulation, shielding you from the intense summer heat and minimizing noise during rainfall.



### Solid, Durable Construction

Our pergola system is built to endure heavy snow loads and extreme weather, thanks to its robust construction with thicknesses between 2 mm and 4 mm.

This design guarantees maximum safety during severe rain, wind, and snow-fall.



### Custom Design Options

Our product comes in six standard sizes. In addition to our standard wood patterns, you can select the color that fits your space with custom wood finish coatings.

For unique projects, our engineering and design team is ready to create specifications tailored to your needs.





**FURNITURE**

**DECK**

**FENCE**

# A MEMBER OF **A Large Family**

Your pergola is equipped with pre-assembled feet, functional LED and rainwater beams, a slatted roof, and a slat rotation mechanism. You can integrate additional accessories like floor decking, curtains, cushions, detachable chairs or sets, heaters, speakers, fans, smart sensors, and blinds at any time.

Investing in Alugarden family products, including mosquito nets, zip curtains, and sliding glass systems, can convert your pergola into a luxurious outdoor space with complete protection.



**ZIP CURTAIN**

*\*Curtains, furniture, and accessories shown are for display purposes only and are not included in the price.*





*\*The car is not even optional. :))*



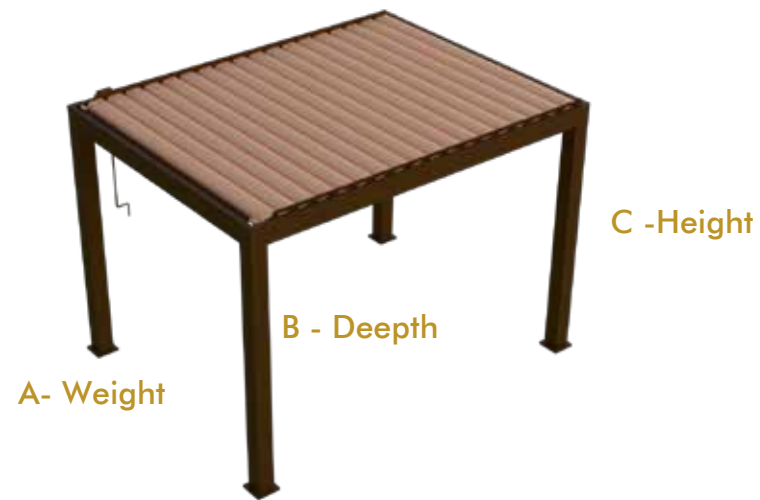
# Car Park

## PRACTICAL PARKING

If you lack a parking space or have an inadequate one, and your vehicle suffers from damage caused by sun, cold, snow, or storms, it's time to create a parking area. Constructing a new parking space can be challenging due to construction requirements, costs, processes, and permits, which might feel daunting. However, the GoldWood pergola serves as an affordable Carpark solution that can be purchased and installed for use within a single day after acquisition.







# Our Stock

MANUEL PERGOLA  
STOCK KIT DIMENSIONS

32



Stock Status	A- Weight	B- Depth	C- Height
Limited Availability	10 feet ~ 3 meters	10 feet ~ 3 meters	8.5 feet ~ 2.6 meters
In Stock	10 feet ~ 3 meters	13 feet ~ 4 meters	8.5 feet ~ 2.6 meters
In Stock	10 feet ~ 3 meters	16 feet ~ 5 meters	8.5 feet ~ 2.6 meters
Limited Availability	12 feet ~ 3.5 meters	13 feet ~ 4 meters	8.5 feet ~ 2.6 meters
Limited Availability	12 feet ~ 3.5 meters	16 feet ~ 5 meters	8.5 feet ~ 2.6 meters
In Stock	13 feet ~ 4 meters	13 feet ~ 4 meters	8.5 feet ~ 2.6 meters
In Stock	13 feet ~ 4 meters	16 feet ~ 5 meters	8.5 feet ~ 2.6 meters





“like wood”

**GOLDWOOD®**  
MANUAL BIOCLIMATIC PERGOLA



Outdoor Systems®  
**AluGarden**

3110 Dr Chenery Alpheratta GA 30004 / UNITED STATES

@alugardenus @alugarden www.alugarden.us

Velimeşe OSB 129. Sk.11/1 Ergene - Tekirdağ / TÜRKİYE +90 282 674 5175

1- 678 - 697- 64 99

mike@alugarden.us



© Copyright : Copyright All illustrations contained in this catalog are the exclusive property of Alugarden A.Ş and are subject to change without prior notice. Any reproduction, imitation, or unauthorized use is strictly prohibited. 2025